

REMCO

I N D U S T R I E S

AGRICULTURAL AND
INDUSTRIAL PUMPS



THE #1 NAME IN PUMP EQUIPMENT

www.remcoindustries.com



PUMP FITTINGS

ProFLO™ 3/4" Quick Attach Fittings

Item Number	Size	Fitting Type	Material
FQ5S-38	3/4" QA x 3/8"	HB Straight Fitting w/ O-Ring	Nylon
FQ5S-12	3/4" QA x 1/2"	HB Straight Fitting w/ O-Ring	Nylon
FQ5S-34	3/4" QA x 3/4"	HB Straight Fitting w/ O-Ring	Nylon
FQ5E-38	3/4" QA x 3/8"	HB Elbow Fitting w/ O-Ring	Nylon
FQ5E-12	3/4" QA x 1/2"	HB Elbow Fitting w/ O-Ring	Nylon
FQ5E-34	3/4" QA x 3/4"	HB Elbow Fitting w/ O-Ring	Nylon
FQ5S-12B	3/4" QA x 1/2"	HB Straight Fitting w/ O-Ring	Black Nylon
FQ5E-12B	3/4" QA x 1/2"	HB Elbow Fitting w/ O-Ring	Black Nylon
QTS-556	3/4" QA x 1/2"	MNPT Straight w/ O-Ring	Black Nylon
FQ5ME-12	3/4" QA x 1/2"	MNPT Elbow w/ O-Ring	Black Nylon
FQ5TS-12	3/4" QA x 1/2"	TUBE Straight w/ O-Ring	Black Nylon

ProFLO™ 5/8" Quick Attach Fittings

Item Number	Size	Fitting Type	Material
FQ3S-38	5/8" QA x 3/8"	HB Straight Fitting w/ O-Ring	Nylon
FQ3S-12	5/8" QA x 1/2"	HB Straight Fitting w/ O-Ring	Nylon
FQ3MS-12	5/8" QA x 3/8"	HB Straight Fitting w/ O-Ring	Nylon
FQ3E-38	5/8" QA x 1/2"	HB Elbow Fitting w/ O-Ring	Nylon
FQ3E-12	5/8" QA x 1/2"	HB Elbow Fitting w/ O-Ring	Nylon



FQ5S-12B Fitting



FQ5E-12B Fitting



QTS-556 Fitting



FQ5TS-12 Fitting



FQ5ME-12 Fitting



FQ3S-FQ5S Series



FQ3E- FQ5E Series



REMCO

Genuine Parts and Accessories

REMCO™ RATE CONTROLLERS



RRC30-DD

Amps:
30

Display:
Digital, displays pressure upto 100 PSI

Capacity:
Can run one 5500 or one Fatboy pump of any flow with pressure limit of 100 PSI

Wiring:
96" Weather Pack

RRC50-DD

Amps:
50

Display:
Digital, displays pressure upto 100 PSI

Capacity:
Can run two 5500 or one Fatboy pump of any flow with pressure limit of 100 PSI

Wiring:
2 X 96" Weather Pack



RRC15-G

Amps:
15

Display:
60 PSI Dial Gauge

Capacity:
Can run one 3300 or one 3.0GPM / 5500 Series Pump

Wiring:
96" Weather Pack

RRC30-G

Amps:
30

Display:
60 PSI Dial Gauge

Capacity:
Can run one 5500 or Fatboy Pump of any flow with pressure limit of 60 PSI

Wiring:
96" Weather Pack



RRC15-NG

Amps:
15

Display:
No gauge or display

Capacity:
Can run one 3300 or one 3.0GPM / 5500 Series Pump

Wiring:
96" Weather Pack



REPLACEMENT PUMP PARTS

Motor

(Includes sealed end bell)

Item Number	Description
M382-S	3300 No Switch, 2-pin Connector
M582-S	5500 No Switch, 2-pin Connector
M70-563-JDS	5500 No Switch, 2-pin Connector, High Performance
70-594-00	Fatboy, No Switch, No Connector



Upper Housing Assembly

(Includes pump head housing, pressure control parts and assembly screws)

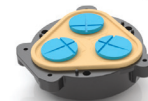
Item Number	Description
UHA7863-7F77	3300 w/Pressure Switch - 5/8" Quick Attach
UHA7863-8F77	3300 w/Bypass - 5/8" Quick Attach
UHA7880-7F77	3300 w/Pressure Switch - Threaded
UHA7880-8F77	3300 w/Bypass - Threaded
UHA7803-7F77	3300 w/Pressure Switch - 3/4" Quick Attach
UHA7803-8F77	3300 w/Bypass - 3/4" Quick Attach
UHA5513-1E77	5500 w/Pressure Switch - Threaded
UHA5513-2E77	5500 w/Bypass - Threaded
UHA5503-1E77	5500 w/Pressure Switch - 3/4" Quick Attach
UHA5503-2E77	5500 w/Bypass - 3/4" Quick Attach



Lower Housing Assembly

(Includes housing, diaphragm, pistons, cam and bearing)

Item Number	Description
LHA7860-7F77	1.2GPM - Demand or Bypass
LHA7863-7F77	2.0GPM - Demand or Bypass
LHA5510-1E77	3.2GPM - Demand or Bypass
LHA5512-1E77	4.0GPM - Demand or Bypass
LHA5513-1E77	5.3GPM - Demand or Bypass



Valve Housing Assembly

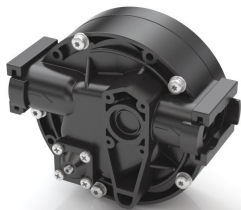
(Includes valves and valve housing)

Item Number	Description
VHA7863-7F77	3300 Series Pumps, viton
VHA5513-1E77	5500 Series Pumps, viton



**REPLACEMENT PUMP PARTS****Threaded Heads**

Item Number	Description
7880-8F77	1.2GPM w/Bypass
7880-7F77	1.2GPM w/Pressure Switch
7883-8F77	2.2GPM w/Bypass
7883-7F77	2.2GPM w/Pressure Switch
5510-1X77	3.0GPM w/Pressure Switch
5510-2X77	3.0GPM w/Bypass
5512-1X77	4.0GPM w/Pressure Switch
5512-2X77	4.0GPM w/Bypass
5513-1X77	5.3GPM w/Pressure Switch
5513-2X77	5.3GPM w/Bypass
PH-5538E-D	7.0GPM - FATBOY w/Pressure Switch
PH-5538E-B	7.0GPM - FATBOY w/Bypass
PH-3900-SF	2.2GPM - SMOOTHFLO
PH-5502-SF	4.0GPM - SMOOTHFLO
PH-5503-SF	5.3GPM - SMOOTHFLO

Quick Attach Heads

Item Number	Description
7860-8F77	1.2GPM w/Bypass - 5/8"
7860-7F77	1.2GPM w/Pressure Switch - 5/8"
7863-8F77	2.2GPM w/Bypass - 5/8"
7863-7F77	2.2GPM w/Pressure Switch - 5/8"
7803-8F77	2.2GPM w/Bypass - 3/4"
7803-7F77	2.2GPM w/Pressure Switch - 3/4"
5500-1X77	3.2GPM w/Pressure Switch - 3/4"
5500-2X77	3.2GPM w/Bypass - 3/4"
5502-1X77	4.0GPM w/Pressure Switch - 3/4"
5502-2X77	4.0GPM w/Bypass - 3/4"
5503-1X77	5.3GPM w/Pressure Switch - 3/4"
5503-2X77	5.3GPM w/Bypass - 3/4"
PH-5518E-D	7.0GPM - FATBOY w/Pressure Switch - 3/4"
PH-5518E-B	7.0GPM - FATBOY w/Bypass - 3/4"



REMCO

Genuine Parts and Accessories

PUMP FILTERS

Filter Number	Inlet	Outlet	Mesh Size
10541	3/4" Male Quick Attach	1/2" Hose Barb	50
10542	3/4" Male Quick Attach	1/2" MNPT	50
R-309T153	1/2" HB	3/8" MBSP	50
R-309T253	1/2" HB	1/2" MBSP	50
R-309TA53	1/2" HB	5/8" Male Quick Attach	50
R-309TB53	1/2" HB	3/4" Male Quick Attach	50
10546	1/2" MNPT	1/2" FNPT Inline Filter/Strainer	50
SS10834	50 Mesh	3/8" Tube	50
SS10422T	50 Mesh	1/2" FNPT	50
LS5512T	1/2" FNPT	1/2" FNPT	50
LS5512B	1/2" Hose Barb	1/2" Hose Barb	50
LS3338T	3/8" FNPT	3/8" FNPT	50
LS3338MT	3/8" MNPT	3/8" MNPT	50
LS3338B	3/8" Hose Barb	3/8" Hose Barb	50



SS10834 Filter



SS10422T Filter



LS5512T Filter



LS5512B Filter



LS3338T Filter



LS3338MT Filter



LS3338B Filter



10541 Filter



10546 Filter



10542 Filter



R-309T153 Filter



R-309T253 Filter



R-309TA53 Filter



R-309TB53 Filter



REMC

Genuine Parts and Accessories

WIRE HARNESSSES

Reference	Type	Length	Molded 2-pin connector
A 901-001	18 AWG wiring harness with on-off switch car adaptor	116.00"	x
B 901-002	18 AWG wiring car adaptor	11.00"	x
C 901-003	18 AWG wiring 30-amp battery clips	12.00"	x
D 901-004	18 AWG wiring harness with on-off switch, two 30-amp battery clips	98.00"	x
E 901-005	18 AWG wiring harness with on-off switch	92.00 "	x
F 901-006	18 AWG wiring harness with on-off switch, lead wire/2-Pin connector combo	30.00"	x
G 901-SWHD	18 AWG on-off Switch. 1.5" length and no connector.		



A
Part #: 901-001



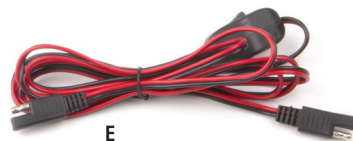
B
Part #: 901-002



C
Part #: 901-003



D
Part #: 901-004



E
Part #: 901-005



F
Part #: 901-006



G
(Switch Detail A & E)
Part #: 901-SWHD

SPRAY GUNS

Reference	Description	Orifice	Length	Hose Barb Inlet
RESG-1830	Economy Spot Spray Gun Filter in Handle	#18	30"	3/8"
RDSG-1818	Deluxe Pistol Grip Spray Gun	#18	18"	3/8"
RTSG-1800	Trigger Grip Spray Gun	#18	18"	3/8"



RDSG-1818



RTSG-1800



RESG-1830

Standard Warranty

REMCO warrants its products to be free from defects in material and workmanship on all products sold by REMCO for resale or for use in purchasers' own business or original equipment manufacturer. Under normal use, maintenance and service (rental use excluded) the following terms apply:

For all REMCO pumps, the warranty will last for a period of one year from date of manufacture, or (1) year use with proof of purchase, not to exceed (2) years in any event. REMCO's obligation under this warranty shall be limited to replacing or repairing at REMCO's discretion, any such product or part which must be returned to REMCO's factory with a Return Material Authorization Number (RMA), transportation charges approved by REMCO or prepaid, and which upon examination, is found to REMCO's satisfaction to have been defective under the terms of this warranty. No credit will be allowed against future purchases for items returned as defective under the terms of REMCO's warranty. REMCO warrants all pump series to be free from material and workmanship defects (under normal use and service) for a period of one (1) year from the date of manufacture, or (1) one year use with proof of purchase, not to exceed (2) two years in any event. This warranty does not extend to any products, which have been altered or modified outside the REMCO factory, to any products that have not been properly maintained, nor does it apply to units that are returned in an unassembled condition. Furthermore, the warranty does not extend to pumps that are non-compliant with REMCO's Engineering Standards. This includes, but is not limited to, pumps ordered without an integral pressure control mechanism. The warranty guarantees that products will perform to

REMCO's flow and pressure specifications throughout the life of the warranty. The warranty does not cover wear, appearance, misuse, abuse, misapplication or external water damage. If the returned product is found not to be defective under the conditions of this warranty, a charge will be made for repair or replacement.

Brush wear may be limited to 1000 hours or less.

This is a Limited Warranty. It covers the product only and the extent of the coverage is limited to the cost of the product. As the manufacturer has no control over shipping, handling and installation, the warranty cannot cover water damage, or any other damage, caused by a leak or other malfunction.

THIS WARRANTY IS IN LIEU OF ALL WARRANTIES, EXPRESSED OR IMPLIED, INCLUDING IMPLIED WARRANTIES OR WARRANTIES OF MERCHANTABILITY AND/OR FITNESS FOR A PARTICULAR PURPOSE. NO PERSON IS AUTHORIZED TO GIVE ANY OTHER WARRANTY OR ASSUME OBLIGATION OR LIABILITY ON REMCO'S BEHALF. REMCO SHALL NOT BE LIABLE FOR ANY INDIRECT, INCIDENTAL, PUNITIVE OR CONSEQUENTIAL DAMAGES OF ANY KIND INCURRED BY THE REASON OF THE USE OR SALE OF ANY DEFECTIVE PRODUCT AND PART. THIS WARRANTY SHALL BE GOVERNED BY THE LAWS OF THE STATE OF MINNESOTA, WITH ANY DISPUTE OR CLAIM VENUED OR HEARD IN THE STATE OF MINNESOTA.



4605 County Road 82 SE
Alexandria, MN 56308
Phone: 763-253-4740
Toll Free: 1-800-228-2481
Fax: 763-253-4741

www.remcoindustries.com

© Copyright Remco Industries 2016. All rights reserved.



www.youtube.com/remcoindustries



www.facebook.com/remcoindustries



A I_2016_r1e1